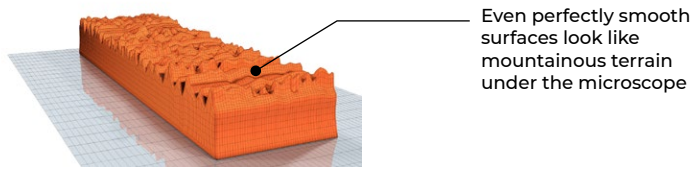
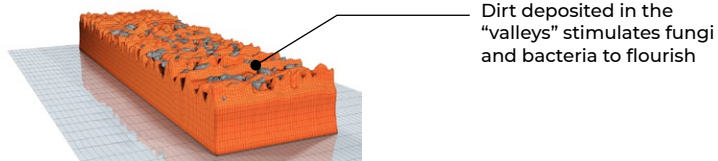


PIKATEC Home

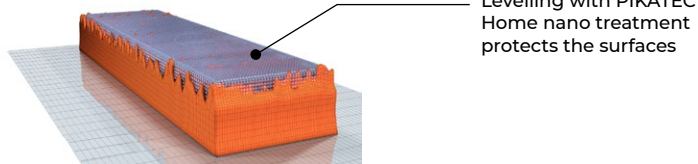
Nano treatment protecting indoor surfaces



Even perfectly smooth surfaces look like mountainous terrain under the microscope

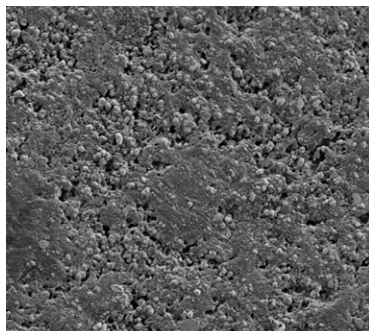


Dirt deposited in the "valleys" stimulates fungi and bacteria to flourish



Levelling with PIKATEC Home nano treatment protects the surfaces

Seemingly a perfectly smooth surface



100 μm

■ Surfaces that appear perfectly smooth, like glass, look like a mountainous terrain under the microscope. Dirt deposited in the "valleys" stimulates fungi and bacteria to flourish. And on the opposite side, the fragile peaks are prone to damage. All this can be prevented by levelling with the PIKATEC Home nano treatment.



■ Nanoparticles of silicon and zircon in protective varnish are 7 to 9 times harder than steel. They improve the hardness of the treated surface, while maintaining the original flexibility. The protective layer thus easily adapts to any material and increases its resistance multifold. ■ Thermal resistance reaches up to 900 °C.

■ The surface tension generated by the negative charge of nanoparticles repels dust, dirt, oil, and other liquids. A special compound of highly adhesive resin and nanoparticles ensures resistance to different chemicals, including acids ■ The varnishes contain UV filters preventing degradation of the treated items.